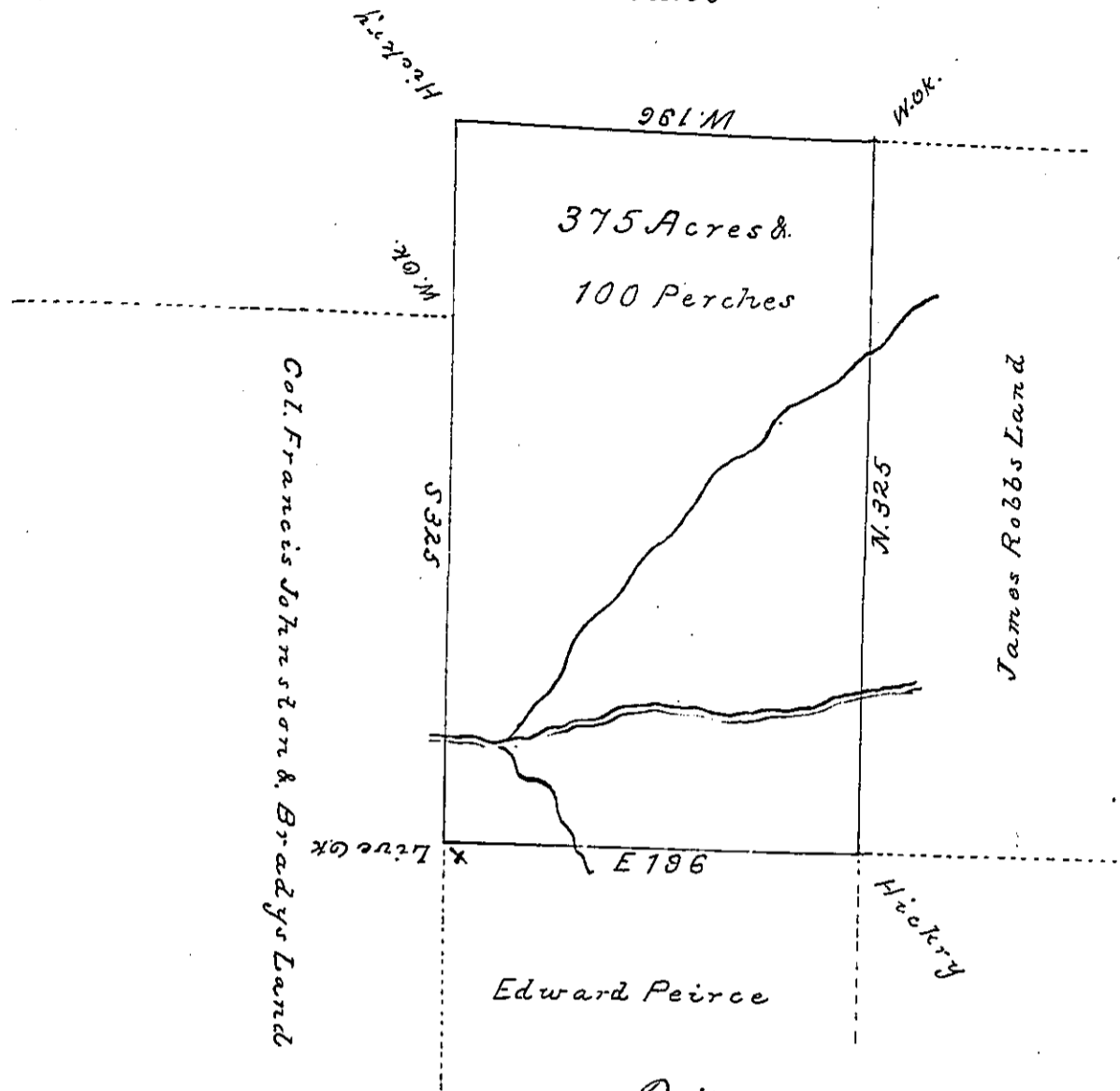


Vacant

Vacant



Price
 Surveyd. for Edward Peirce on the 30th day of
 June 1785 the above Described Tract of Land con-
 taining Three Hundred and seventy five Acres and
 one hundred perches with allowance of Six pr ct
 &c Situated and lying on Cherry Run a branch
 of Lick Creek and adjoining Lands of James
 Robb, Col. Francis Johnston and Capn. Samuel
 Brady in Northumberland County by Warrant
 of the 17th day of May 1785 number 178.
 John Buchanan D^r
 John Lukens Esq^t.
 Survt. Gen^l.

IN TESTIMONY that the above is a copy of the original remaining on file in the
 Department of Internal Affairs of Pennsylvania, made con-
 formably to an Act of Assembly approved the 16th day of
 February, 1833. I have hereunto set my Hand and caused
 the Seal of said Department to be affixed at Harrisburg, this
 Fourth day of August 1896
 James W. Patton
 Secretary of Internal Affairs.